

Developing an Environmental Impact Report/
Environmental Impact Statement (EIR/EIS)
to Cover the California
Department of Fish and Game's Hatchery Program

Department has been stocking fish since the late -1800s



Prior to being sued by the Center for Biological Diversity and Pacific Rivers Council (Plaintiffs)

- Department committed to writing an Environmental Impact Report

Plaintiffs still filed suit

- Claiming that the Department's stocking program needed to comply with the California Environmental Quality Act (CEQA)

Judge agreed and ordered the Department to comply with CEQA

What will our CEQA document cover?

What will our CEQA document cover?

--Stocking of the fish reared at our owned/operated hatcheries

What will our CEQA document cover?

--Stocking of the fish reared at our owned/operated hatcheries

--Operation of our 14 Trout Hatcheries and Planting Facilities

What will our CEQA document cover?

- Stocking of the fish reared at our owned/operated hatcheries
- Operation of our 14 Trout Hatcheries and Planting Facilities
- Operation of our 10 Anadromous Hatcheries

What will our CEQA document cover?

- Stocking of the fish reared at our owned/operated hatcheries
- Operation of our 14 Trout Hatcheries and Planting Facilities
- Operation of our 10 Anadromous Hatcheries
- Issuance of Private Stocking Permits

What will our CEQA document cover?

- Stocking of the fish reared at our owned/operated hatcheries
- Operation of our 14 Trout Hatcheries and Planting Facilities
- Operation of our 10 Anadromous Hatcheries
- Issuance of Private Stocking Permits
- Fishing in the City Program

What will our CEQA document cover?

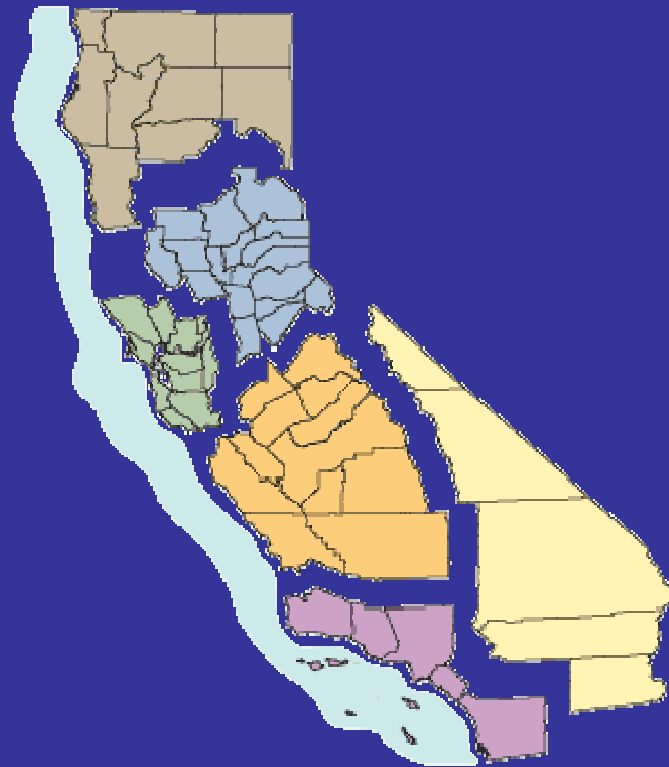
- Stocking of the fish reared at our owned/operated hatcheries
- Operation of our 14 Trout Hatcheries and Planting Facilities
- Operation of our 10 Anadromous Hatcheries
- Issuance of Private Stocking Permits
- Fishing in the City Program
- Classroom Aquarium Education Program

What will our CEQA document cover?

- Stocking of the fish reared at our owned/operated hatcheries
- Operation of our 14 Trout Hatcheries and Planting Facilities
- Operation of our 10 Anadromous Hatcheries
- Issuance of Private Stocking Permits
- Fishing in the City Program
- Classroom Aquarium Education Program
- Implementation of Fish and Game Code 13007

Challenges

--6 different Department regions



Challenges

--6 different Department regions

--numerous water bodies

Challenges

--6 different Department regions

--numerous water bodies

--limited budget

Challenges

--6 different Department regions

--numerous water bodies

--limited budget

--compressed time-line (set by Judge)

Challenges

- 6 different Department regions
- numerous water bodies
- limited budget
- compressed time-line (set by Judge)
- interim court order limiting stocking

Challenges

- 6 different Department regions
- numerous water bodies
- limited budget
- compressed time-line (set by Judge)
- interim court order limiting stocking
- developing mitigation

Interim Court Order

Do not stock:

Monitoring surveys show presence of any of the Plaintiff's species list

Plaintiff's Species List

Arroyo Toad (*Bufo californicus*):
Yosemite toad (*Anaxyrus canorus*)
California Red-Legged Frog (*Rana aurora draytonii*)
Northern red-legged frog (*Rana aurora*)
Mountain yellow-legged frog (*Rana muscosa*)
Foothill yellow-legged frog (*Rana boylei*)
Cascades frog (*Rana cascadae*)
Northern leopard frog (*Rana pipiens*)
Oregon spotted frog (*Rana pretiosa*)
California tiger salamander (*Ambystoma californiense*)
Western pond turtle (*Clemmys marmorata*)
Goose lake tui chub (*Gila bicolor thalassina*)
Hardhead (*Mylopharodon conocephalus*)
Modoc sucker (*Catostomus microps*)
Owens speckled dace (*Rhinichthys osculus ssp*)
Owens tui chub (*Gila bicolor snyderi*)
Santa Ana Sucker (*Catostomus santaanae*)
Arroyo chub (*Gila orcutti*)
Lahontan cutthroat (*Oncorhynchus clarki henshawi*)
Paiute Cutthroat Trout (*Oncorhynchus clarki seleniris*)
Little Kern Golden Trout (*Oncorhynchus aguabonita whitei*)
McCloud River redband
Goose Lake redband
Warner Lakes redband

Interim Court Order

Do not stock:

Monitoring surveys show presence of any of the Plaintiff's species list

Where monitoring surveys have not been conducted for Plaintiff's species list

Interim Court Order

Do not stock:

Monitoring surveys show presence of any of the Plaintiff's species list

Where monitoring surveys have not been conducted for Plaintiff's species list

Reservoirs less than 1,000 surface acres

- in critical red legged frog habitat
- in areas where red legged frog are known
- hydrologically connected to other waters

Stocking Allowed:

Reservoirs greater than 1,000 surface acres

Any place that surveys (approved protocol sampling) do not show presence of Plaintiff species list

Mitigation stocking

Approach for developing the EIR/EIS

--looked at 85 species (Decision Species)

Approach for developing the EIR/EIS

--looked at 85 species (Decision Species)

--did not examine the waters where we stock fish

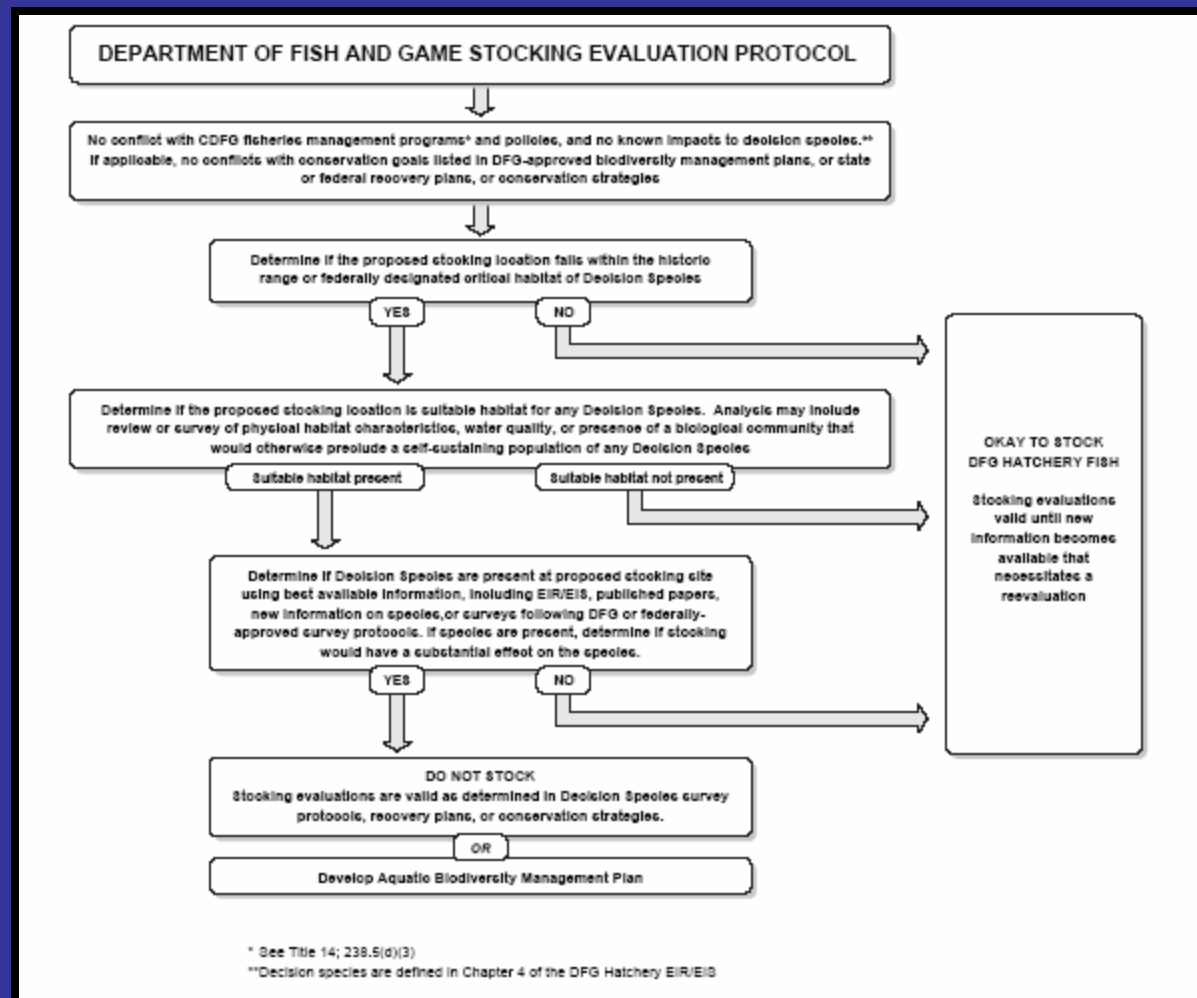
Approach for developing the EIR/EIS

- looked at 85 species (Decision Species)

- did not look at the waters where we stock fish

- developed a Pre-Stocking Evaluation Protocol (PSEP)

Pre-Stocking Evaluation Protocol



Questions



